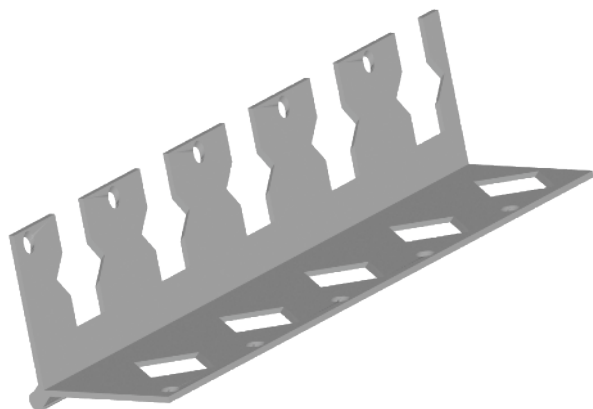




corner arch bead (angle arch bead)



- used for the protection, stabilization and accurate making of edges
- is used for making of untypical shapes, especially in arch making
- the bead is set to an edge and fixed accordingly in respect to plaster thickness, the set edge is aligned; on making of arches, it is needed to form the profiles gradually and equally according to the arch angle
- the bead also simplify plaster smoothing

Material	Dimension mm	Ordering No.	Length m	Packing pcs
PVC	25 x 25 x 1	D/10	2,5	25
PVC	25 x 25 x 1	D/10.1	3,0	25

Recommendation:

A recommended clip on distance is 10 cm. The profile is applied for large arch.

Storage:

A horizontal storage position is recommended. The profiles packed in cardboard covers need to be stored in a dry place. Maximum recommended storage time is 24 months.