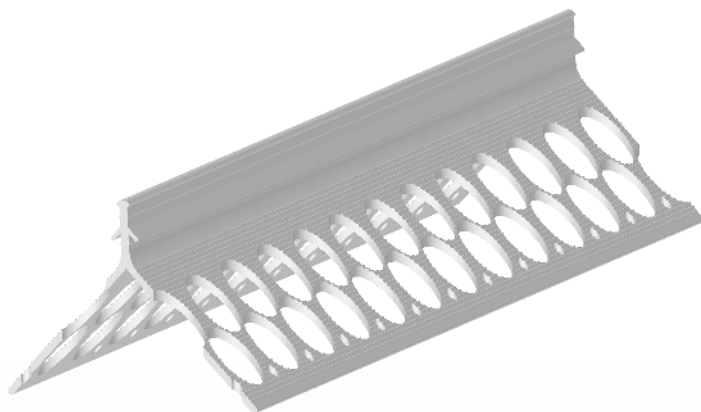


corner bead for outside plastering 6



- used for protection, stabilization and accurate edges making
- the profile is set to the edge and fixed accordingly in respect to the plaster thickness
- used especially for wet plasters
- resistant against chemical agents contained in plasters

Material	Dimension mm	Ordering No.	Length m	Packing pcs
PVC	6	D/23	2,5	20
PVC	6	D/23.1	3,0*	20
PVC	6	D/23.2	2,75*	20

* made to order

Recommendation:

Apply the corner bead with round edge on extremely exposed places.

Storage:

A horizontal storage position is recommended. The profiles need to be stored in a dry place. Maximum recommended storage time is 24 months.