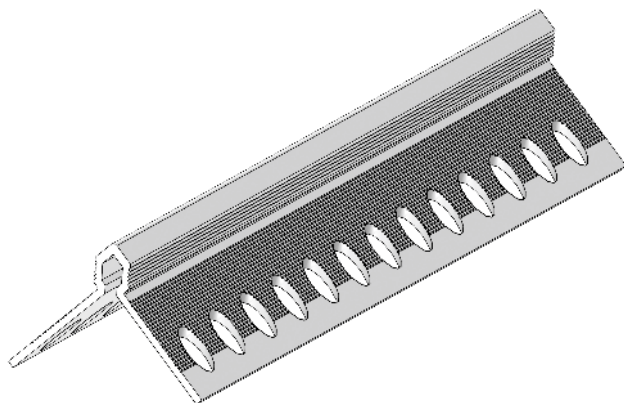


# dry wall corner bead



- used for protection, stabilization and accurate edges making
- the profile is set to the edge and fixed accordingly in respect to the plaster thickness; the set layer is aligned
- the round edge simplify plaster smoothing

Material	Dimension	Ordering No.	Length	Packing
	mm		m	pcs
PVC	25 x 25 x 1	D/07	2,5	40
PVC	25 x 25 x 1	D/07.1	3,0	40

### Recommendation:

Apply the corner bead with round edge on extremely exposed places.

### Storage:

A horizontal storage position is recommended. The profiles packed in cardboard covers need to be stored in a dry place. Maximum recommended storage time is 24 months.