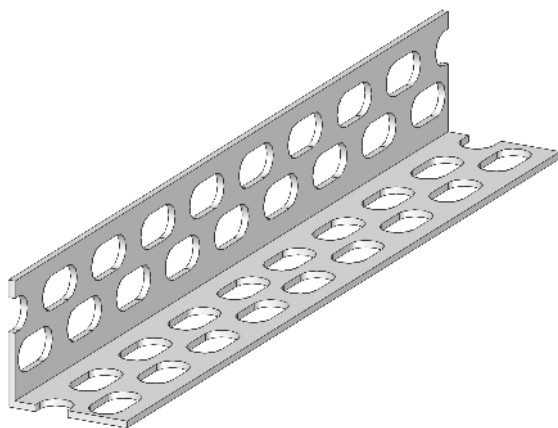


corner bead – “sharp type”



- used for protection, stabilization and accurate edges making
- the profile is set to the edge and fixed accordingly in respect to the plaster thickness; the set layer is aligned

Material	Dimension	Ordering No.	Length	Packing
	mm		m	m
PVC	23 x 23 x 1,2	D/01.7	2,5	20 700

Recommendation:

Do not use with plasters in thermal insulation systems.

Storage:

A horizontal storage position is recommended. The profiles need to be stored in a dry place. Maximum recommended storage time is 24 months.