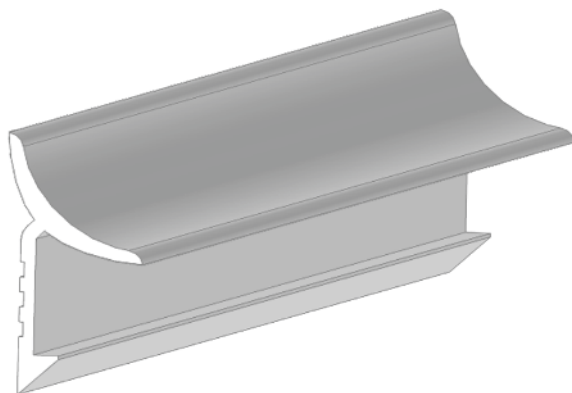




inner corner profile UNI



- used for making tile inner corners and also as a perfect skirting between walls and floors
- use for variable tiles or floor tiling thicknesses
- creation of a perfect appearance
- decorative, hiding purposes
- beads ending and connection is solved with plastics corners
- on pollution of a bigger extent, environmentally decomposable detergents can be used

Material	Dimension	Ordering No.	Length	Packing
	mm		m	pcs
PVC	UNI	B/18 white	2,5	60
PVC	UNI	B/18.1 bahama	2,5	60
PVC	UNI	B/18.2 grey	2,5	60

Recommendation:

An equal gap width must be kept on tiling.

In corners, the neighboring wall horizontal gaps must concur.

Storage:

A horizontal storage position is recommended. The profiles packed in cardboard covers need to be stored in a dry place. Maximum recommended storage time is 24 months.