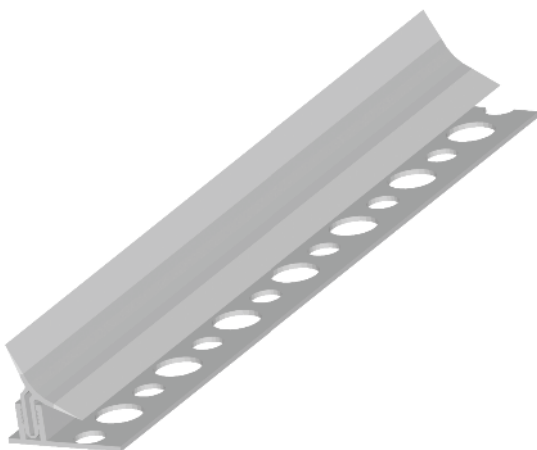


# bath and shower corner profile



- used for tile ending and sealing around baths or shower baths
- as an advantage, the possibility of replacement of the sealing part without any damage to tiles should be taken into account
- creation of a perfect appearance
- decorative, hiding purposes
- the used material: rigid PVC, co-extrusion made of TPE
- on pollution of a bigger extent, environmentally decomposable detergents can be used

Material	Dimension	Ordering No.	Length	Packing
	mm		m	pcs
PVC	25 x 1,2 x 1,2	B/07 white	2,5	9
PVC	25 x 1,2 x 1,2	B/07.1 bahama	2,5	9
PVC	25 x 1,2 x 1,2	B/07.2 grey	2,5	9

## Recommendation:

Before anchorage part fixing, we recommend testing of its position against the bath in a "dry" way. The co-extruded soft part must firmly adjoin both bath and tiles. To increase the tightness, silicon sealant can be applied into the space under the sealing part. Free bath profile ends seal with silicon sealant or use end corners. The corner connection solve in a bevel way. Reseal the connections with sanitary silicon. Apply the extractable part not sooner than after a perfect hardening. Press the profile in the manner that the sealing part firmly adjoins both bath and tiles.

## Storage:

A horizontal storage position is recommended. The profiles packed in cardboard covers need to be stored in a dry place. Maximum recommended storage time is 24 months.