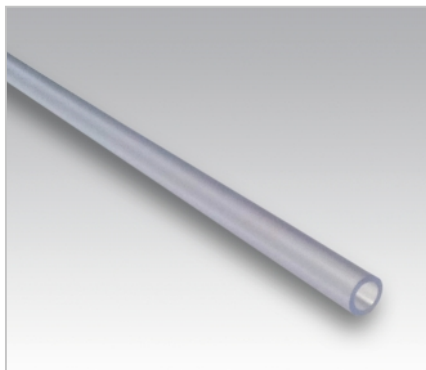


SPECIAL HOSES AND TUBES

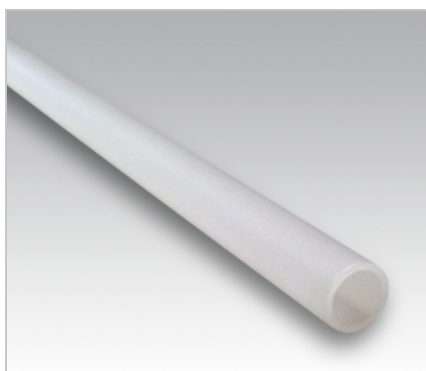


TUBES of precise lengths

- Use:** For simple application in the health care industry, the food industry and other branches of industry.
- Material:** Phthalate-free plasticized PVC, conform with the Council Directive 93/42/EEC to produce sanitary devices.
- Type:** Single-layer transparent, matt or clear colour. Please inquire about other colours.
- Working temperature:** -5 to +50°C.
- Comment:** Goods are not normally in stock, made to order.

dimensions inner / outer	wall thickness	cut length*
mm	mm	mm
3,7/0,5	1,6	from 20 mm accurate to ± 1%
4/0,8	1,6	from 20 mm accurate to ± 1%
6/4	1	from 20 mm accurate to ± 1%
7,3/4,3	1,5	from 20 mm accurate to ± 1%
9,1/6,1	1,5	from 20 mm accurate to ± 1%

* please inquire about other cut lengths

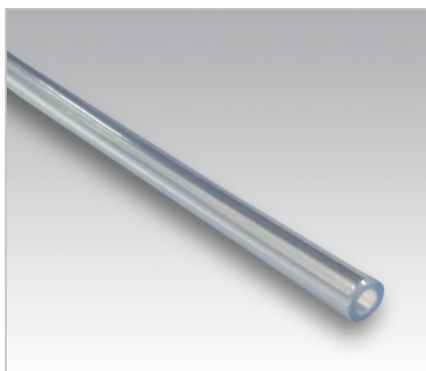


PIPETTES

- Use:** For veterinary use.
- Material:** PP, HDPE.
- Type:** Natural colour.
- Working temperature:** +5 to +40°C.
- Comment:** Goods are not normally in stock, made to order.

material	dimensions inner / outer	order number	cut length*	packaging
	mm	code	mm	
PP	6,4/4,0	04040006D0	500	1500 ks / box
PP	3,5/2,3	0402C003E0	750	500 ks / sleeve
HDPE	9,7/7,3	-	500	1500 ks / box

* please inquire about other cut lengths



CATHETERS

- Use:** For veterinary use.
- Material:** PVC.
- Type:** Natural colour.
- Working temperature:** -5 to +60°C.
- Comment:** Goods are not normally in stock, made to order.

dimensions inner / outer	order number	cut length*	packaging
mm	code	mm	box
4,9/2,5	0402E004I0	500	2 000 pcs
4,7/2,5	0402E004G0	500	2 000 pcs

* please inquire about other cut lengths