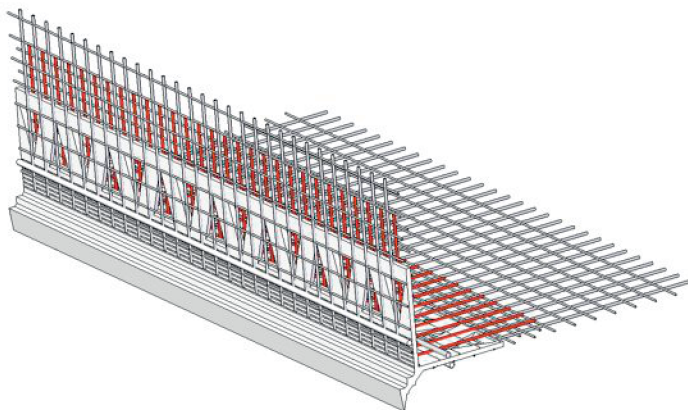


corner profile with AFD[®] drip nose



- an unique solution for fire-resistant lintels of hole fillings
- in combination with an AFC[®] corner profile (frame) assures comprehensive compliance with the requirements stipulated for fire protection of buildings
- compliant with the requirements specified by the ČSN 730810 standard, tested in accordance with the ISO 13 785-1 standard procedure
- awarded Fire Classification Certificate (PKO)
- optimal alignment of fibre mesh in corner areas
- quick and simple handling and application
- chemically stable
- **patented solution**

Material	Dimension	Ordering No.	Length	Packing
	mm		m	pcs
PVC	20x21 wgm 100x150 + wgm 50x50	D/35	2,5	25
PVC	20x21 wgm 100x200 + wgm 50x50	D/35.1	2,5	20

Recommendation:

At the edge of the lintel, apply putty compound to the width of the integrated fibre mesh. Profiles should only be placed onto putty compound. Then smooth over. For all-over reinforcement the fibre mesh should be stretched over the whole of the integrated profile mesh. To shorten the profile use scissors designed for work with plastic profiles. Installation work must be performed within the temperature range +5°C to +30°C (air and underlay temperature).

Storage:

A horizontal storage position is recommended. The profiles need to be stored in a dry place. Maximum recommended storage time is 24 months.